



2020 Faculty Survey of International Research Activity

University of Florida International Center
Office for Global Research Engagement
Supporting Faculty to Build Knowledge Globally

October 2020

University of Florida International Center

The OFFICE FOR GLOBAL RESEARCH ENGAGEMENT (OGRE) facilitates international research to increase UF's global presence. OGRE supports faculty to advance international research.

In pursuit of international research excellence, our role is to:

- **INTRODUCE** faculty new to international research to active university networks and experienced mentors.
- **CONNECT** faculty, students, and staff with those who share research interests and are interested in working in similar countries or regions.
- **FOSTER** research networks for internationally focused communities of practice.
- **EXPAND** UF's knowledge and capacity in working in international venues.
- **ASSIST** faculty, students, and staff in identifying sponsored research opportunities and programs.
- **FACILITATE** the process of navigating the UF administrative process for conducting international research.
- **SUPPORT** Fulbright visiting scholars at UF, and UF scholars traveling abroad.

For more information: OGRE@ufic.ufl.edu and <https://www.internationalcenter.ufl.edu>

SUPPORTING FACULTY TO BUILD KNOWLEDGE GLOBALLY.



Faculty Survey of International Activity

October 2020

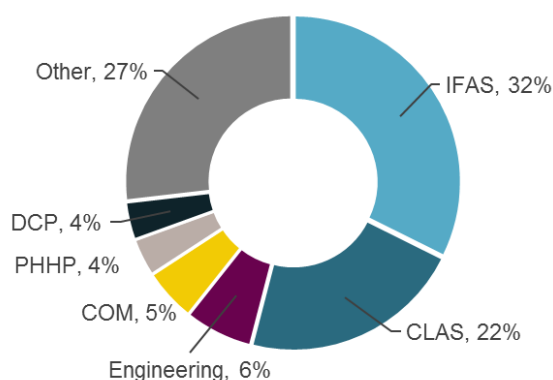
Table of Contents

Executive Summary	ii
Key Findings	ii
Travel Disruption	ii
International Research in a Post Pandemic World.....	iii
AI within an International Perspective	iii
Future of International Research	iii
Faculty Survey of International Research Activity.....	1
Survey to Gauge Faculty International Research Activities in a Post Pandemic World	1
Goal and Objectives of Survey.....	1
Sampling Frame: Breakdown of Surveys Sent by College.....	2
Responses: Breakdown by College.....	3
PART A: International Research, Teaching and Engagement Activities.....	4
PART B: Research and Education in Post Pandemic World.....	21
PART C: The UF Artificial Intelligence Initiative	25
Thank You for Your Feedback	26

Executive Summary

Since March 2020, mobility for faculty, students, and staff at UF has come to an abrupt stop. The long-term prognosis for face to face meetings and travel for collaboration, meetings, conferences, etc. is unclear. In light of this uncertainty, the International Center (UFIC) surveyed 720 faculty who

Percent of Respondents by Unit



research. More than three quarters reported that they have collaborated on joint publications and other scholarly activity; have visited faculty and staff at an international partner institution and have hosted faculty from abroad at UF.

Globally, UF faculty have well-developed networks; respondents had, on average, seven partners/collaborators outside of the US. During this travel disruption, [44% believe that their international partners abroad will be able to continue the research activity that needs to be completed locally](#).

On Average Respondents:

- Take 3.3 trips per year;
- Are planning their next trip in 8 months;
- Have 7 international collaborators.

[needs to be completed locally](#). However, almost one in five do not have a local partner. More than half have activities in Europe and almost another half in Latin America and the Caribbean.

Travel Disruption

For the majority of respondents, the travel disruption this summer and fall has not changed the likelihood that they continue to work with their current international partners. Only five percent stated that they will no longer pursue international activities; overwhelmingly,

88% report that they will continue to collaborate with their current partners.

The majority, almost [85%](#), had [travel plans that were disrupted](#) and almost [80%](#) noted that their [international activity was disrupted](#) this summer. Three quarters report that they canceled travel to conferences and have canceled prearranged trips to collaborate with partners. A little more than half report that project deadlines were set back.

“I think being a global citizen is more important than ever.”

are active in international research. We distributed the survey in July and August and received 272 usable responses, representing a response rate of 38%. The response rate reflects the number of surveys distributed. The majority of surveys were sent to faculty in the Institute for Food and Agricultural Sciences and the College of Liberal Arts and Sciences.

Key Findings

Almost 90% of respondents report that their international activity is tied to international

In what ways have you worked with international partners?

- 89% Collaborative research
- 87% Joint publications and other scholarly activity
- 84% Visited colleagues at international partner
- 74% Hosted international faculty
- 64% Hosted partner's students at UF
- 60% UF students visited international partner

“I have delayed grant submissions that would have supported international research.”

International Research in a Post Pandemic World

Respondents reveal that their international research is relevant to issues that are of importance to a post-pandemic world. Indeed, almost half (48%) believe their work is relevant and another 32% are not sure. A segment of the faculty believes the coronavirus has increased the importance of their work, and a substantial number are not yet sure whether their topic has a unique

14%

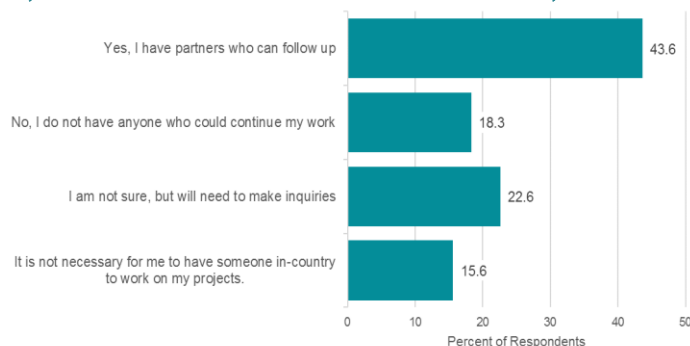
Will shift focus to address topics tied to a post pandemic world.

significance in a post pandemic world. The implication is that international research will make a substantial contribution to overall COVID-focused research. The topics they identify as relevant include those tied to health, wellness, and disease; as well as, topics related to climate change, community resiliency, environmental impact, food production, food safety and food security, economic systems, educational systems, ecological systems, and issues tied to technology.

AI within an International Perspective

A segment of the international researchers surveyed believe that their work will include applications of artificial intelligence (AI). A little more than a quarter (29%) believe that their work touches on AI, while a substantial percentage, 40% are not sure. Additionally, 18% believe their partners have AI capabilities. Clearly, UF's international connections have the potential for making a substantial contribution to the new university-wide AI initiative.

If you are unable to travel to your destination, are there people in your network who could continue the activities on your



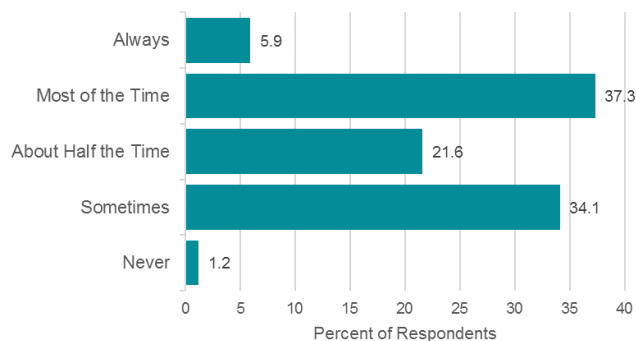
29%

Current international research is relevant to AI.

18%

Have international partners with experience in AI.

In the future, how often do you think you will interact with your international partners using remote



Future of International Research

Looking toward the future, 60% believe that they will continue their programs similar to that before the travel restrictions. However, 40% stated that the travel restrictions have modified how they perceive future international research. Their comments reflect that respondents believe change is inevitable and they will re-think their involvement in international programs. A large number report concerns for their health and safety, as well as for the wellbeing of their students and collaborators. Virtual and technological solutions are often

mentioned as probable means of overcoming travel limitations. Remote technologies will serve as substitutes for working with international partners. For most activities, faculty are confident that they can perform various collaborative activities using remote technologies. To support the growing trend of using technology to supplement or replace travel, UFIC is investing in programs to support virtual exchanges designed to advance global learning and other international collaborative activities.

68% VERY CONFIDENT

Using remote technology with international partners to prepare manuscripts.

“I hope that the International Center can

The majority will continue pursuing projects and activities with an international outlook, and the need for university programmatic support is clear. Based on their comments, faculty look to UFIC for advocacy on their behalf and on behalf of

their students. Additionally, 55% look to UFIC to provide seed funds to explore new international research opportunities, and 53% to provide seed funding for graduate students who pursue international work. [Fifty-two percent look to UFIC for assistance in identifying sponsored research and 36% to facilitate connections to research institutions abroad.](#) The status of the University of Florida is tied to our international reputation.

As our faculty continue their work in this increasingly complex world, UFIC has an opportunity to support them in ways that has the greatest potential to accelerate their impact. The results of this survey suggest a mandate of continued programmatic and strategic investment; a mandate that serves UF’s mission and elevates our reputation worldwide.

“I am concerned about my students (both grad and undergrad) being able to have the opportunities for international research collaboration.”

“I’m trying to find ways for my research group to network and maintain relationships with international partners despite the lack of travel.”

Faculty Survey of International Research Activity

Report



Survey to Gauge Faculty International Research Activities in a Post Pandemic World

Since March 2020, mobility for faculty, students and staff at UF has come to an abrupt stop. The long-term prognosis for face to face meetings and travel for collaboration, meetings, conferences etc. is unclear. In light of this uncertainty, the International Center's Office of Research Engagement undertook an initiative to document faculty concerns and be responsive and proactive as we advocate for a future where international activity resumes in a post pandemic world. In July 2020, the International Center forwarded a survey to 720 UF faculty who have been active in international research. The following report presents the results of the survey.

Goal and Objectives of Survey

The goal of the survey is to [provide data that support \(or deny\) a continued investment in promoting, developing and supporting faculty in their pursuit of international activities](#). As such, there are three objectives:

1. Quantify the following attributes to measure the extent of demand for travel and international collaboration:
 - The extent of international research at UF by college.
 - The location of international research and engagement activities.
 - Output and outcomes of current international initiatives and expectations for the future.
 - Attitudes about the necessity of physical travel.
 - UFIC resources that stakeholders would value.
 - The extent (if any) of the international network our faculty have outside of the U.S.
2. Provide a measure of the size of international networks and reach of UF faculty.
3. Provide a measure of whether international research reflects two emerging trends at UF:
 - Research and engagement tied to the global pandemic or COVID-19 specifically.
 - The Artificial Intelligence initiative that UF leadership hopes will transcend colleges and disciplines.

Sampling Frame: Breakdown of Surveys Sent by College

College	Number of Faculty	Percent of all Faculty Surveyed
IFAS	190	26.4%
CLAS	151	21.0%
Engineering	74	10.3%
Medicine	69	9.6%
PHHP	30	4.2%
COTA	24	3.3%
DCP	20	2.8%
Vet Med	20	2.8%
Education	18	2.5%
Journalism and Communications	16	2.2%
Health and Human Performance	15	2.1%
Pharmacy	15	2.1%
Center for Latin American Studies	13	1.8%
Business	12	1.7%
FLMNH	11	1.5%
Law	10	1.4%
Dentistry	5	0.7%
Libraries	5	0.7%
Nursing	5	0.7%
Student Affairs	5	0.7%
Type One Centers	5	0.7%
Harn Museum	2	0.3%
Office of Research	2	0.3%
One Health	1	0.1%
Provost & Education	1	0.1%
UF International Center	1	0.1%
TOTAL	720	100.0%

Responses: Breakdown by College

Response Rate = 37.8%

College	Number of Faculty	Percent of all Faculty Surveyed
IFAS	88	32.4
CLAS	59	21.7
Engineering	18	6.6
Medicine	14	5.1
DCP	10	3.7
PHHP	10	3.7
COTA	8	2.9
Pharmacy	8	2.9
Education	7	2.6
Health and Human Performance	7	2.6
Journalism and Communications	7	2.6
Vet Med	7	2.6
Center for Latin American Studies	6	2.2
Law	4	1.5
Business	3	1.1
FLMNH	3	1.1
Libraries	3	1.1
Emerging Pathogens Institute	2	0.7
Harn Museum	2	0.7
Nursing	2	0.7
UF International Center	2	0.7
One Health	1	0.4
UF Administration	1	0.4
TOTAL	272	100.0%

PART A: International Research, Teaching and Engagement Activities

1. In what ways have you worked with international partners?

Percent of Respondents	Engagement Activity
88.6	Collaborative Research
86.8	Collaborated on joint publications and other scholarly activity
83.8	Visited faculty/staff at an international partner institution
74.3	Hosted international faculty
64.3	Enabled students from international partner institutions to visit UF.
59.6	Enabled UF students to visit/study at an international partner institution
36.8	Provided opportunities for students at an international partner institution to complete a portion of their degree at UF
0.7	I have to pursued any international activity
14.3	Other <ul style="list-style-type: none"> 1. Have established a long-term relationship with a hospital used by the host institution for clinical experiences. 2. My UF students are the Co-I on the project along with a representative from the international hospital. Advise graduate students and teach graduate courses in a foreign institution Attended international seminar Collaborated with international institution in organizing exhibition Directed field based study abroad for 15 years Established MOU with German university. Extension and Teaching too Fulbright Governance activity in scholarly associations with an international membership. Hosted a Fulbright scholar from Cameroon and facilitated field research and collaboration between UF faculty and partners with his local group. Hosted international speakers (non-academic) In-country workshops, courses and meetings In-service training programs such as short courses, webinars and workshops with professionals (not at universities) International research with international subjects; organizing and attending conferences with international partners outside the US. International seminar series joint conferences Joint grant proposal Led international study abroad programs Organized a joint conference Participated in Faculty Fellowship in Israel Participation in international conferences PHD reviewer Planning new project with international partners Post-doctorals from other countries, conference organizing in US and abroad

- Presentation in International Conference
- Presented at an international conference
- President of the Board of the Global Forum for Rural Advisory Services & Chair of Executive Committee of the Caribbean Agricultural Extension Providers' Network
- probably irrelevant since I retired in 2012
- professional staff training time at UF from international institutions
- proposed potential collaborations
- Provided opportunities for high school student spending their academic year in Florida.
- Serve as military Liaison for Military Partnership Grant for European Bases and Cuba
- Served as adjunct faculty member at a Brazilian University (UNICAMP)
- Served as volunteer consultant on citrus IPPM in the country of Georgia
- study abroad class
- Study Abroad Program
- Study abroad program; not with international institution but with SA provider + did a virtual exchange in one of my classes and intend to do more.
- Summer Abroad Programs
- Support to ongoing "development" activities
- Take UF students on an international educational experience as a part of a course and led a study-abroad program.
- Taken graduate student for in-field research experience (unrelated to their degree)
- Taken students to international locations for field work.
- Taught an intensive course at UF for international delegations annually.
- Taught International classes
- Taught international undergraduate students
- Taught OSS and included students from partner institution
- Travel to provide education and bring professionals here for education
- Traveled with students on study abroad program to assist primary faculty
- When this survey email hit my inbox, I was in a meeting about this very subject: how difficult it is to start an international component when you don't happen to be from another country or already have some personal connection.
- Will have an incoming international PhD student

2. Prior to the impact of COVID-19, how often, on average, did you travel outside of the U.S. on behalf of the University of Florida?

mean = 3.3 trips per year

Percent of Respondents	Number of Trips per Year
1.5	None
3.1	One trip every two or three years
16.6	One trip a year
65.7	Between one and five trips
10.3	6 to 10 trips
3.1	More than 10

3. In what region is the majority of your international activities?

Percent of Respondents	Region
61.4	Europe
47.1	Latin America and the Caribbean
29.8	Asia (East Asia)
23.9	Africa (Sub Sahara)
15.8	Asia (South Asia)
14.3	North America (Not including the U.S.)
10.7	Oceania
8.1	Middle East and North Africa
2.6	Other
	<ul style="list-style-type: none"> Central Asia From Florida through an article and one presentation. Greenland Southeast Asia UF team (and my group) is a part of major International experiments at the largest in the world international research center CERN, Geneva, Switzerland. US participation at the Large Hadron Collider at CERN is supported by the DOE

4. With the disruption from the coronavirus, will you continue to pursue international collaboration in the same region?

Percent of Respondents	Region
87.5	Yes, will continue my work with my current partners
16.2	I will pursue new partnerships in another region
5.1	I will no longer continue to pursue international activities

Comments

- Activities are on hold. Need to wait and evaluate the risks before resuming activities.
- At this point, through virtual exchange only.
- But travel will be greatly curtailed or delayed for the next 12 mos.
- but with no travel until summer '21
- close to retirement
- Currently sporadically involved and assisting via distance communication
- Depending on the university policy on international collaboration.
- Developing more online instances
- I am continuing my research partnerships but not much else given limitations in travel
- I am retired
- I am retiring in November.
- I am trying, but out is significantly more difficult
- I am working on publications at a distance but cannot do field work or attend meetings with them in person. Our collaboration will continue though, I hope.
- I communicate via video chat, email, and other digital means
- I currently do not pursue international collaboration
- I currently pursue international collaboration and have collaborators in other countries
- I have already participated in a virtual conference with our partners from Brazil. Just last week. I will NOT travel or engage in in-person meetings at the very least until the summer of 2021.
- I have not participated in international activities
- I haven't pursued international collaboration
- I hope to, but I'm unsure how feasible this will be
- I just started my position. I will start partnerships after the pandemic
- I plan to continue my collaborations but I am not planning to travel to these locations as I had originally
- I will attempt to maintain my work, but it's hard to predict how long current restrictions may inhibit that.
- I will but anticipate really extensive delays. I cannot actively work on any of the things I had been working on planning.
- I will continue collaboration with current partners. But it seems like we will need to delay the start of any new projects for several years depending on how the pandemic stabilizes and global vaccination efforts continue.
- I will continue so long as it's possible. I have begun reorganization my research priorities for more work in North America because of COVID as a backup plan
- I will continue to seek international partnerships as opportunities arise
- I will continue work with my future partners but it will be done virtually only for the foreseeable future.
- I will discontinue until deemed safe to do so.
- I will only pursue international partnerships remotely/virtually
- I will pause on travel but continue work with partners
- I will pursue international activity as opportunities arise but will remain mindful of COVID and other challenges.
- I will pursue new partnerships regardless of region
- I will pursue SOME work with partners, but not all work, due to COVID.
- I will, but they are curtailed until we can travel
- I'm also expanding to Asia, and continue to pursue.
- I'm not sure

- If available in my field, yes.
- In my experiments at the Large Hadron Collider (LHC) at CERN CERN about 100 international partner institutions besides US are participating
- In the future, I'll continue to offer my study abroad class, but not in 2021. After things return to normal, I'd like to continue the class.
- It's too early to tell, but hope to continue with current partners, if possible.
- Just started position/ international activities N/A at this time
- Most projects are completed at this point
- Much is on hold but when we are able we will go back to our normal activities as soon as possible
- My Federal funding provides for my continued travel as soon as Covid restrictions are lifted.
- My research is in a country that has eliminated COVID, and a place where I have family ties. I plan to conduct international research as soon as possible.
- N/A
- New partnerships are considered once we have the covid-19 situation resolved
- No travel for a while though.
- Not at the current time but hopefully will eventually when the pandemic is under control.
- Not sure
- Not sure at all. Too much uncertainty to invest much time in sorting out details.
- Not until it is safe to do so.
- Once it is safe to travel
- Only after the epidemic is under control.
- Opportunities opened and closed, not all related to Covid
- Our activity ended, but I will pursue activities in the same region
- Pending availability of funds and permission to travel
- See what happens
- Some day!
- some projects are indefinitely postponed; others can continue
- Spending fall semester in Denmark
- The collaboration will be more challenging
- The type of collaboration will depend on how the current crisis evolves
- Though I am continuing to work with current partners, the nature of the collaborations have changed because I am barred from traveling to the countries where I do field research. This is extremely limiting.
- Travel will be limited, but collaborations will continue
- UF's international travel regulations are making it very difficult to travel internationally. It is very discouraging
- Unsure
- Virtually of course.
- Waiting to determine status of activities
- We are already planning our study abroad itinerary for summer 2021
- We are working together via virtual technology
- We have a newly funded NASA/USAID project to work in Ghana
- We're trying to continue, but I've already had two trips disrupted which is negatively impacting our collaborations.
- will continue to work, but expect that work will slow down & focus on existing rather than new projects
- With reduced activities until the condition gets better
- Working remotely through Zoom and other on-line platforms

- Working remotely with students and professionals via Zoom, WhatsApp and other platforms
- Yes, I will maintain connections and hope to resume travel soon

5. UF researchers often work with local partners abroad. If we measure your network by the number of organizations with which you are affiliated, **approximately**, how large is your network of partners outside of the U.S.?

Percent of Respondents	Number of Partners Outside of the U.S.
1.6	0
3.9	1
7.5	2
17.3	3
7.1	4
6.3	5
42.1	1-5
33.7	6-10
22.8	11-15

Mean: 7.0 partners outside of the U.S.

6. Prior to the current travel restrictions, did you have any travel planned to visit your partners?
- 84.4% Yes 5.4% No 10.1% Perhaps, nothing definite

7. Once UF travel restrictions are lifted, when do you believe you will be able to travel abroad on behalf of UF? Estimate the number of months.

Percent of Respondents	Number of Months Prior to Anticipated Travel
3.2	0
39.6	1-6
49.2	7-12
6.0	13-18
2.0	19-24
100%	

Mean=8 months

8. Sometimes it is necessary to be in a particular location to collect data, study cultural phenomena, conduct experiments, etc. If you are unable to travel to your destination, are there people in your network who could continue the activities on your behalf?
- 43.6% Yes, I have partners who can follow up
 - 18.3% No, I do not have anyone who could continue my work
 - 22.6% I am not sure, but will need to make inquiries if it is possible
 - 15.6% It is not necessary for me to have someone in-country working on my projects.

9. Has your international research been interrupted as a result of the travel restrictions?

- 52.9% Yes, definitely
- 26.5% Yes, a little
- 13.2% No, we are continuity to work remotely
- 7.4% Not at all, we did not have activities planned during the spring and summer

10. How has the stay at home order impacted your international activities?

Percent of Respondents	Impact
77.9	Canceled travel to conferences
72.4	Canceled trips for collaborative research
54.4	Project deadlines were set back
22.8	More time to develop to current projects
18.4	Closed my laboratory
16.5	Cannot fulfill the commitments for my sponsored research
12.5	Other
	<ul style="list-style-type: none"> • Applied to no-cost extensions and modified timeline for new grants • Attended meetings virtually, continue with sponsored project • Being retired, all my current and future plans are voluntary • Cancel visiting scholar trip. That is worst thing that could have happened to my research. They foster international collaboration and write papers • cancelled fieldwork • Cancelled future study abroad programs for now. • Cancelled hosting international farmer group • Cancelled study abroad • Cancelled training program, postponed sabbatical • Cancelled trips for teaching/training • Cannot provide programming for partner institutions, cannot travel to visit partners and potential partners • Cannot travel for student recruitment. • Cannot visit my students and they cannot visit me • colleague is on lockdown in his country, unable to travel to US to meet with us • Could not teach my class • Delayed conferences • Develop new research related to COVID19 • Difficulties in spending funds have hampered reaching certain objectives. • Free time to join new local projects • Has not because my activities are in late winter • I do not have international activities • Impact to relationships (my work is on collaboration and communities with socio-technical supports) • In-person training and supervision needs to be replaced by remote communication. This adds a lot of burden and less assurance of quality. • It has affected our students and their planned field practicums • Labs are open again now.

- Limited opportunities for discussion. Zoom is not the same as meeting F2F in situ.
- Lost time to many meetings and discussions about what to do
- More time to write manuscripts, most of which are with international authors
- Moved international phd defense to zoom format
- My usual summer research time has been hijacked by the need to re-tool and redesign my courses for online instruction, which I feel to be necessary.
- N/A
- No current international projects
- No impact
- No international activities for my position
- No planned international collaborations. Finishing up a few ongoing projects.
- No research travel
- None
- Not much
- Opened opportunity for web based international seminar
- Partner's organizations are suffering financially and unclear that they will still be viable when this is over.
- Preliminary data collection by collaborators suspended
- Project continued
- Unable to invite international collaborators or their students to conduct research.
- Visitors cannot get visa.
- Was a potential, but not confirmed, travel opportunity that I have abandoned exploring

11. Has the travel ban made you rethink your priorities for international activity?

- 54.9% No, I will continue my programs as before
- 36.6% Yes

Although approximately one third of respondents stated that the travel restrictions have contributed to how they perceive future international research, the open ended responses following up suggests there is widespread concern. As is verified in the closed ended question, a substantial number reported they will continue international activity. Comments reflect that respondents believe change is inevitable and they will re-think their involvement in international programs. A large number report their personal concerns for the health and safety, as well as, for the wellbeing of their students and collaborators. Virtual and technological solutions are often mentioned as probable means of overcoming travel.

The comments to this question are classified into 9 themes (and "Other") listed below. Certain comments are duplicated if any fall under multiple categories.

Themes:

1. Continue International Activity
2. Postpone International Activity
3. Change is Inevitable
 - a. Close Programs
 - b. Reduce International Activity
4. Virtual and Technological Solutions
5. Uncertainty and/or Reservations about Travel
 - a. Health and Safety Concerns
6. Less Travel
 - a. More domestic research
 - b. Less travel associated with sustainability concerns
7. Collaborate with Local Partners
8. Concern over Students
9. Fewer International Visitors
10. Other

Continue International Activity

- I think being a global citizen is more important than ever
- I will be more concerned about student / postdoc safety, but I will continue to travel where possible - probably at a much lower rate than before
- I will continue as planned, however some elements of the work has been modified to accommodate new deadlines.
- I will continue doing the international work, but from a distance until it is safe to travel again.
- I will continue to pursue international collaborations and activities, but I think about feasibility aspects differently now
- I will continue to the best of my abilities
- I will fulfil my obligations in research
- I will try to continue depending on safety issues.
- I will try to maintain all of our international programs, but I now want to start some local research projects. I have none now.
- If possible, I will continue research in Peru
- It feels all the more important to do international work, now, since my research is on public health and disability especially social exclusions.
- more important than ever
- No change in priorities, but temporary changes in means of accomplishing those priorities
- Some is essential
- The three primary countries where I work in South America have banned all international travel. All of my field research is based on observing cultural and political phenomena and requires long-term relationships and cannot be completed by contracted help/surrogate researchers. My priorities for international travel are the same, but given the travel ban I cannot travel and given my safety and those who I work with I have had to rethink how to safely do my work.
- we are currently continuing as planned in a tentative fashion, but will not be able to sustain like this indefinitely

Postpone International Activity

- No change in priorities, but temporary changes in means of accomplishing those priorities
- Not sure until post-election and we learn how pandemic impacts everything travel and collaboration related.
- Postponed
- Temporary (~1yr) pause

Change is Inevitable

- I have delayed grant submissions that would have supported international research
- I have to focus more on the project that does not involve international partners
- I may be more selective to travel to different countries
- I may have to discontinue international collaboration, and as a result, reduce my overall research activities, and instead, focus on teaching alone.
- I worry that since Florida is such a hotspot, it will be years until our International partners will let us into their countries.
- Projects that rely solely on the international aspect will need re-evaluation
- The risk of disruption and institutional inefficiency will result in reduced international work.
- Yes, in odd ways. If anything my focus has narrowed. At the same time, I had made commitments for activities that have been cancelled/postponed. Some of these collaborations were in the early stages.

Close Programs

- May not offer study abroad program.
- Yes, in odd ways. If anything my focus has narrowed. At the same time, I had made commitments for activities that have been cancelled/postponed. Some of these collaborations were in the early stages.
- Yes; I had planned a study abroad class to India. I don't know if that will be possible in the next few years, given long term concerns for student safety in India.

Reduce International Activity

- Canceled student involvement in international research, decreased opportunities for trainees, changed research projects
- I have delayed grant submissions that would have supported international research
- I may have to discontinue international collaboration, and as a result, reduce my overall research activities, and instead, focus on teaching alone.
- The risk of disruption and institutional inefficiency will result in reduced international work.

Virtual and Technological Solutions

- Alternative approaches to sustain international collaboration
- Exploring more virtual means of communication.
- Great emphasis on distance learning in shared educational programs
- Hard to continue activities virtually, so until things open up...
- have to find new creative ways to do things
- I need to feel safe to travel. Other collaboration using online communication continue
- I was able to salvage a sponsored research program but will need to rethink if I can remotely train partners to collect necessary, next-step data. I am thinking more about ways to collaborate remotely although this is not my preference.

- I work closely with various local partners, so on the one hand I feel comfortable passing data collection to them. However, I think about the ethics of sending people with little access to PPE in harm's way - it does not currently seem worth it. In other areas I work or collaborate the internet is available to train community health workers, but in others, it's definitely not. So then I think about the quality of data being collected if the enumerators or data collectors are not properly/thoroughly trained yet.
- I sites/countries/Universities simultaneously
- I'm trying to find ways for my research group to network and maintain relationships with international partners despite the lack of travel
- It has encouraged me to think more creatively about how to pursue research
- Moved to online collaboration
- Some of the conferences in my field were held online. The organizing committees are thinking about whether to keep them that way. However valuable networking opportunities are lost I feel and so I would still travel but perhaps less frequently.
- The work was already expensive in time and money. It may not be worth it. It will be a great loss in my estimation, but I may have to move to different emphases or different ways of interacting.
- We may have to plan collaboration using remote technologies. Also, domestic opportunities will be explored.
- Will likely work remotely with less likelihood of travel; had already been slowed because of political issues in another country

Uncertainty and Reservations about Travel

- Always put my family first and so travel little. But does make me worry about getting stuck somewhere. Also about visitors getting stuck here
- Based on the situation here in USA and the country i will visit
- Concerned about perception of US researchers abroad
- How to deal with funded projects.
- I am not sure when any international travel, research or teaching can continue
- I don't know when I can resume international activities
- It is not the ban, it is common sense that keeps me from traveling abroad. Oh, and that most countries would not allow a US-passport holder to enter because we are governed by morons.
- Not clear when it will be safe to travel even if restrictions are lifted.
- Not sure what to expect now.
- One more complication for international travel
- The uncertainty makes everything hard to plan and I hate the thought that I will be unable to follow through on my commitments.

Primarily Health and Safety Concerns

- How can we better empower in-country partners to ensure the research on food security continues in a safe and responsible manner?
- I need to feel safe to travel. Other collaboration using online communication continue
- I value international collaborations. However the difficulty now is the risk that travel entails to my health, as well as the negative stigma that international collaborations have in the current US politics
- I will continue doing the international work, but from a distance until it is safe to travel again.
- i will not travel until it is safe to do so
- I will try to continue depending on safety issues.

- I work closely with various local partners, so on the one hand I feel comfortable passing data collection to them. However, I think about the ethics of sending people with little access to PPE in harm's way - it does not currently seem worth it. In other areas I work or collaborate the internet is available to train community health workers, but in others, it's definitely not. So then I think about the quality of data being collected if the enumerators or data collectors are not properly/thoroughly trained yet.
- Independent of the travel ban, the safety of traveling (by my own calculations) will impede my travel for the foreseeable future
- May be too risky to resume.
- My work is better with travel and in-person and onsite work, but my work cannot create danger for folks if there is a risk of carrying illness.
- Not the travel ban, but Covid has made me rethink when I will be ready to travel internationally (risk of getting stuck somewhere)
- The three primary countries where I work in South America have banned all international travel. All of my field research is based on observing cultural and political phenomena and requires long-term relationships and cannot be completed by contracted help/surrogate researchers. My priorities for international travel are the same, but given the travel ban I cannot travel and given my safety and those who I work with I have had to rethink how to safely do my work.
- We need to prioritize the safety of faculty and staff first
- While I know this is a temporary disruption, in a larger sense the ban has encouraged me to think about how to limit international flights, due primarily to the negative climate effects they entail but also for other health concerns.
- Will limit travel to locations in which health care is limited

Less Travel

- Cutting back.
- Depending on the economies, public health, and politics of countries being crippled during the pandemic, it may be unwise to pursue research in-country for several countries where my team has worked over the past five years.
- do less
- I am on the planning team for an international conference in Czech. They think this will happen... I'm not sure it is worth it. Oct 2021.
- I may have to discontinue international collaboration, and as a result, reduce my overall research activities, and instead, focus on teaching alone.
- I may travel less.
- I plan to travel less.
- I will be more concerned about student / postdoc safety, but I will continue to travel where possible - probably at a much lower rate than before
- I will be more selective
- I will plan for projects that don't necessarily require travel (i.e., could be maintained even if I couldn't travel for data collection)
- it is going to be difficult to travel.
- It was difficult before all of this. It is completely infeasible now.
- lock down for travel
- More local involvement.
- My research is sports related. I had a huge project related to the Tokyo Olympics planned, which required a lot of prep work with the organizers (Tokyo 2020 and International Olympic Committee). Though the Olympics have merely been postponed as of today, I fear they will be canceled next year, which would virtually cancel more than a year's work on the

project. It's discouraging and makes me want to downscale so I can ensure getting pubs out first (for tenure purposes).

- Other reasons such as political ones force me to back out.
- Reduce travel in future
- The quarantine and the time invested has made me rethink short research trips.
- The risk of disruption and institutional inefficiency will result in reduced international work.
- The work was already expensive in time and money. It may not be worth it. It will be a great loss in my estimation, but I may have to move to different emphases or different ways of interacting.
- will likely work remotely with less likelihood of travel; had already been slowed because of political issues in another country
- will limit travel to locations in which health care is limited

More Domestic Research

- backup plans are to reinvest in my research in North America, which previously was only about 10% of my research program. post-covid it might be closer to 60%
- I will try to maintain all of our international programs, but I now want to start some local research projects. I have none now.
- More work locally
- We may have to plan collaboration using remote technologies. Also, domestic opportunities will be explored.

Less Travel Associated with Sustainability Issues

- I will think about sustainability of projects in a different light
- we are currently continuing as planned in a tentative fashion, but will not be able to sustain like this indefinitely
- While I know this is a temporary disruption, in a larger sense the ban has encouraged me to think about how to limit international flights, due primarily to the negative climate effects they entail but also for other health concerns.

Collaborate with Local Partners

- Expand ways to connect with partner institutions remotely and develop remote programs together.
- How can we better empower in-country partners to ensure the research on food security continues in a safe and responsible manner?
- i think it is even more important to provide opportunities for students and faculty for international research collaborations with a larger component on capacity strengthening of international partners
- I was able to salvage a sponsored research program but will need to rethink if I can remotely train partners to collect necessary, next-step data. I am thinking more about ways to collaborate remotely although this is not my preference.
- i will insist on getting more funds for local partners to be able to have them continue more of the research
- I work closely with various local partners, so on the one hand I feel comfortable passing data collection to them. However, I think about the ethics of sending people with little access to PPE in harm's way - it does not currently seem worth it. In other areas I work or collaborate the internet is available to train community health workers, but in others, it's definitely not. So then I think about the quality of data being collected if the enumerators or data collectors are not properly/thoroughly trained yet.

- I'm trying to find ways for my research group to network and maintain relationships with international partners despite the lack of travel
- Rely more on local expertise.
- Some will not be feasible because it is impossible to enter local (international) schools for research purposes.
- We need to expand offer courses to international partners

Concern for Students

- I am concerned about my students (both grad and undergrad) being able to have the opportunities for international research collaboration.
- I think it is even more important to provide opportunities for students and faculty for international research collaborations with a larger component on capacity strengthening of international partners
- I will be more concerned about student / postdoc safety, but I will continue to travel where possible - probably at a much lower rate than before
- Travel bans and visa restrictions have made it challenging to recruit and maintain international students.

Fewer International Visitors

- Much harder to bring people here from Mexico; harder to get together to plan

Other

- concerned about perception of US researchers abroad
- Depends on the outcome of the elections in Nov 2020.
- I am thinking of leaving UF in favor of another institution (including international) that is more supportive
- More time for family
- Other reasons such as political ones force me to back out.
- Re-assessing practical concerns. I wish to see a strong statement that UF will continue a commitment to encourage and support international research.
- Reconsidering for other reasons

12. In the future, how often do you think you will interact with your international partners using remote technology?

- 1.2% Never
- 34.1% Sometimes
- 21.6% About half the time
- 37.3% Most of the Time
- 5.9% Always

13. To what extent do you believe you can effectively perform any of the following activities using telecommunication tools?

	Percent of Respondents			
	Very Confident	Somewhat	Not at All Confident	Do not plan to work with collaborators
Problem conceptualization	46.0	41.7	8.7	3.6
Research/experiment design	37.3	50.0	7.9	4.8
Joint data collection	14.3	43.9	31.1	10.7
Manuscript development	67.7	26.0	2.8	3.5
Funding solicitation	40.5	40.1	10.5	8.9
Serve on graduate committees	45.6	38.0	5.6	10.8
Participate and/or teach in workshops	24.9	48.6	20.1	6.4
Recruit students from partner institution	13.9	40.2	32.8	13.1

Other

- Because of our intensive interactions and my number of international projects, most of my interactions with international colleagues has always been remotely. I only have funds and time to meet with colleagues in each project once or twice a year.
- Conduct ethnographic field research
- current international collaborations were all built on connections made in person. an entirely new model would have to evolve for new connections to be built from online-only interactions. perhaps the next generation of scientists can do this - likely not me.
- Few in person meetings+ many online is best for most activities
- I am retired and my research does not require a lot of funding, etc
- I believe I can be effective in recruiting students from international institutions, however with travel restrictions and a continued need to conduct work virtually, I am concerned about offering a full, high quality experience for international student interns.
- n/a
- Networking
- Networking and broad dissemination of research results
- Offer webinars for them
- Problem solving
- Service to the profession
- Stakeholder engagement
- Unable to oversee work
- Will continue to work with staff at the bases

14. What services from the International Center would best support your international research activities?

Percent of Respondents	Office for Global Research Engagement Services
54.8	Provide seed funds to explore new international research opportunities
52.9	Provide seed funds to bring students to international research destinations
51.5	Assist in finding sources of funding to support my international research
36.0	Facilitate connections to research institutions abroad
33.5	Advise on international compliance and export control regulations
31.6	Assist with proposal development
28.7	Provide workshops on topics to support international collaboration, research, and compliance
24.3	Connect me to researchers at UF working in the same region
23.2	Review grant proposals

Other (10.7%)

Advocacy (Faculty and Students)

- Advise when you become aware of funding opportunities for international students. Let's work on enhancing opportunities for students from Africa.
- Advocacy for international students on campus
- Advocacy for pre-tenure faculty in T+P. I'm pre-tenure and I actually feel like my international activities are seen as a net negative. I am trying to leverage a network I established prior to my position here and the fact that I am collaborating with people I worked with before coming here I believe is seen as activity that is not part of me building my program here at UF.
- It would be helpful if the international center could respond to requests for help. I have asked twice about how to help international grad students who have been accepted into the UF program but whose visa applications have been frozen and have not yet heard anything from anyone.
- Support for foreign graduate students!
- The most important thing: Advocate with UF and state leadership for international students and faculty, who are currently in extremely hard circumstances due to restrictions and uncertainties related to travel and visa. Travel and visa are ESSENTIAL to the life and wellbeing of these international families. The current visa-related uncertainties for F-1 and J-1 personnel, for example, are having a disruptive effect on the well-being, mental health, and consequently work productivity of UF internationals. International students and faculty need to know from UF leadership that they are valued and that their interests are listened to and protected in the current toxic environment. A practical example: UF should join Harvard, MIT and dozens of other universities across the nation in denouncing and legally contrasting the most recent F-1 visa restrictions.

International Partnerships

- Assist with establishing Intl. agreements with institutions.
- Be supportive of International interactions. Most of mine are one on one and do not involve unique data collection opportunities based on location, rather personnel expertise.

- Enable more exchange programs with foreign universities w/o requiring parity in sending/receiving students
- Facilitate MOU's, help us fund and teach students located abroad and who cannot come into the country

Hurdles and Challenges to International Activity

- Minimize bureaucracy for international collaboration
- Not have so many restrictions on courses that can be taught in conjunction with the international program. Requirements of so-called experiential learning recommended by the international center are at middle-school level. Faculty should be given the freedom to teach international courses the way the field requires. And the endless accounting is counterproductive
- Reduce the constraints related to writing projects and getting funding to collaborate with international partners. For instance, - Most of my partners are in NGOs and they cannot pay the % IDC UF demands. Furthermore they have asked for MOUs with UF and have visited campus going to many meetings -- But we experience the whole process as overwhelming, highly bureaucratic, so much "check box" ticking, and non-functional in terms of helping them. Focus is on what UF can gain (or not lose or be held responsible for). It is a most frustrating process. Needs to be streamlined and much more flexible. Not one-size-fits-all. So many rules.

Resources (Training, Workshop, Funding)

- Advise international visitors
- Facilitate networking and career development opportunities for junior scientists (grad students & postdocs)
- Provide workshops/resources on current status of international research at UF (i.e. when/where are we allowed to travel for research purposes? What additional steps might we need to take?)
- Someone who understands employment law in other countries
- Standardize project management and financial tools for fund compliance. Training of accounting officers for funds coming from USAID or other Intl. donors.
- The international center has never provided me value.
- We need a clear system to have virtual remote scholars at UF!! No visa required!

Grant and Sponsored Project Support

- Grant writing mentorship, philanthropy funding
- Reduce the constraints related to writing projects and getting funding to collaborate with international partners. For instance, - Most of my partners are in NGOs and they cannot pay the % IDC UF demands. Furthermore they have asked for MOUs with UF and have visited campus going to many meetings -- But we experience the whole process as overwhelming, highly bureaucratic, so much "check box" ticking, and non-functional in terms of helping them. Focus is on what UF can gain (or not lose or be held responsible for). It is a most frustrating process. Needs to be streamlined and much more flexible. Not one-size-fits-all. So many rules.

VISAs

- Help with Visa and Work Permit Issues
- Help with visas for students
- It would be helpful if the international center could respond to requests for help. I have asked twice about how to help international grad students who have been accepted into the UF program but whose visa applications have been frozen and have not yet heard anything from anyone.
- The most important thing: Advocate with UF and state leadership for international students and faculty, who are currently in extremely hard circumstances due to restrictions and uncertainties related to travel and visa. Travel and visa are ESSENTIAL to the life and wellbeing of these international families. The current visa-related uncertainties for F-1 and J-1 personnel, for example, are having a disruptive effect on the well-being, mental health, and consequently work productivity of UF internationals. International students and faculty need to know from UF leadership that they are valued and that their interests are listened to and protected in the current toxic environment. A practical example: UF should join Harvard, MIT and dozens of other universities across the nation in denouncing and legally contrasting the most recent F-1 visa restrictions.

PART B: Research and Education in Post Pandemic World

15. Do your international research and engagement activities touch on topics that will be of importance in a post pandemic world? If yes, in which of the following topics?

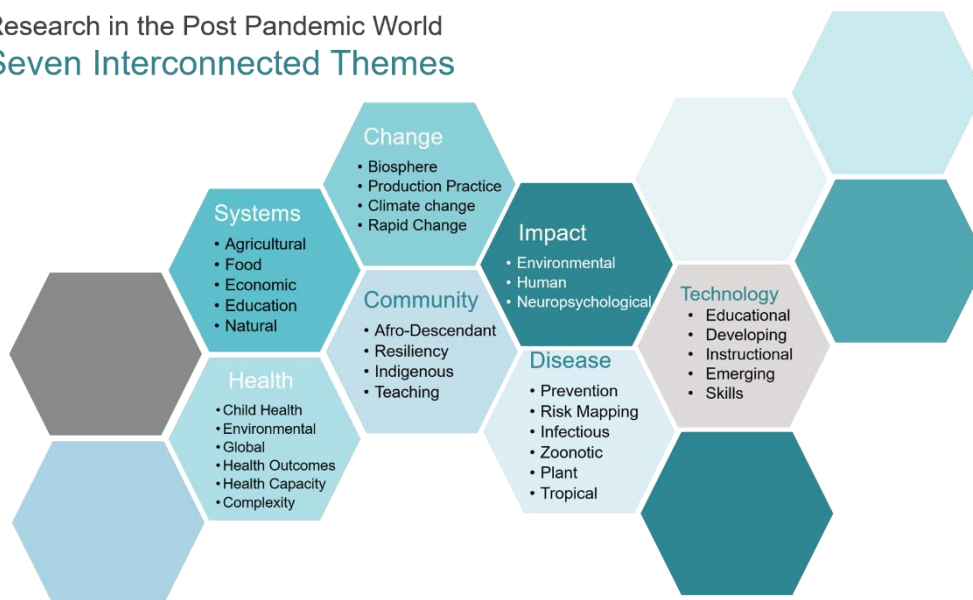
- 20.0% No
- 31.5% I am not sure
- 47.8% Yes

Relevant Topics in a Post Pandemic World

Faculty identified their expertise and knowledge on a large number of topics relevant to the current global pandemic. The subject areas fall into seven interconnected themes:

1. Systems: Agricultural, Food, Natural, Economic, Education
2. Change: Biosphere, Production Practice, Climate Change, Rapid Change
3. Community: Afro-Descendant, Resiliency, Indigenous, Teaching
4. Health: Child Health, Environmental, Global, Health Outcomes, Health Capacity
5. Disease: Prevention, Risk Mapping, Infectious, Plant, Tropical, Zoonotic
6. Impact: Human, Agricultural, Environmental, Neuropsychological
7. Technology: Emerging, Educational, Developing, Instructional, Skills

Research in the Post Pandemic World Seven Interconnected Themes



Alphabetical Listing

- Agricultural development
- Agriculture
- Airborne contagion
- Big data, AI, competition, biotech
- Biodiversity loss; use and engagement with digital data
- Bio surveillance, medical geography, disease risk mapping
- Chronic diseases
- Citrus
- Citrus genetics, genomics and breeding
- Climate change, Food production
- Climate change; sea-level rise saltwater intrusion
- Climate Change
- Coinfection with CoV
- Conflict Management, Governance, Natural Resource Management
- Conflict Management, Participatory decision-making
- Conservation and Development in the Amazon
- COVID and society, resource use
- COVID-19
- COVID-19 wastewater measurements
- Crop protection
- Cross-border trade
- Delivering educational programs
- Developing technology for local food production
- Disaster preparedness, recovery, response, & mitigation
- Disease prevention
- Economic recovery, trade and financial integration of economies
- Ecosystem restoration
- Education and leadership for language minoritized students.
- Education, youth development, experiential learning
- Educational systems. Applications of emerging technologies for learning and collaborative study.
- Educational technology in china
- Effect of C on rural women in Latin America
- Elections
- Emerging pathogens
- Engagement, depression, loneliness
- Environment conservation & human well-being
- Environmental conservation
- Environmental education - vital to decreasing animal to human pathogen transmission; especially important given food insecurity issues post pandemic.
- Environmental health and human impacts
- Environmental quality and Equity
- Environmental studies
- Epidemic modeling, data analytics, security and privacy
- Equine science and management, specifically equine welfare and the environmental impact of equine operations.
- Family Relations
- Food and healthy diet
- Food and nutrition security
- Food efficiency / security
- Food production
- Food production, human/natural systems
- Food safety
- Food safety, and hygiene
- Food safety, gender and nutrition
- Food security
- Food security and poverty
- Food security, affordable diversified diets, sustainable food systems
- Food security, agriculture
- Food security, food production and environmental impact of agriculture in a post-pandemic world
- Food security, food supply chain efficiency
- Food system adaptation
- Food systems
- Food systems and international trade

- Government and industry performance post pandemic; use of ICT during and after pandemic
- Green and just recovery; governance
- Hazard mitigation, urban design, architecture
- Health
- Health capacity and infrastructure - how it is equipped to manage climate-health research and information; how gender roles play into health work and communication
- Health care response to the pandemic
- Health, Stress, and Wellness!
- High Energy physics, Fundamental particle physics
- How COVID has impacted the diagnosis and treatment of tuberculosis in India and Sub-Saharan Africa
- How to bring sporting experiences to people through media if they can't get to the stadiums. People seem to care quite a bit...
- Human settlements revision
- I have been encouraging indigenous partners to write about the impact of COVID 19 in indigenous communities and help them publish their accounts.
- I recently got a grant to document the experience of Florida farmworkers during COVID 19. This archive will be of interest for the home countries of the immigrants.
- I specifically research drivers of emergence of infectious diseases
- Infectious disease research
- Infodemic
- Inhalation therapy
- Instructional technology, student engagement and success
- International outreach
- Leisure/recreation and tourism
- Many areas corresponding to the sdgs
- Mass communication, social media
- Mass production of insects for food and feed
- Mass production of insects for food and feed, quality control in insect mass production
- Mental health
- Mental health; addiction
- Migration and Refuge-seeking
- Movement of non-native invasive species
- My research has been focused on singers of early music and the economics of performers needing specialized knowledge. Traditional performance has all but halted, and that raises new questions about the economic pressures of performing artists. That will be a topic in my graduate classes.
- Neglected tropical diseases in the developing world; sustainable development and health
- Neonatal surgery, medical education
- Neurodegenerative disease
- Neuropsychological impact
- Neutrino oscillations are New Physics and we are in the middle of studying them
- New Drug Development
- Nursing Care
- Obesity, metabolism
- Online collaboration tools much better than zoom
- Only post-pandemic, not in pandemic-related areas
- People - wildlife interactions will become more pronounced owing to COVID in developing countries
- Pest Management, Biological Control, Invasive Species
- Plant conservation
- Plant diseases affecting crop production
- Plant pathogen and insect pest management
- Political inclusion, development
- Politics of Epidemics
- Politics, Race Relations
- Post-COVID rehabilitation
- Precision ag, integrating livestock/row crops and the sustainability aspects
- Public health, disability, and social exclusions. International NGO's and state agencies and research... Their good and ill effects.
- Public health, social support, social networks, migration
- Psychiatry, mental health, the visual arts
- Recruiting international students
- Reducing food losses in countries in sub-Saharan Africa and South America
- Refugees, humanitarian assistance, global health
- Renewable energy transformation
- Research on zoonosis will become more important
- Resilience of family agriculture and local communities due to economic and health crisis.
- Respiratory virus transmission and mitigation
- Same as before
- Social networks
- Socio-economics and livelihoods
- Socio-technical supports for collaboration and research/teaching communities, shared collections
- Sport consumption
- Studies of research productivity and collaboration
- Sustainability in agriculture and disruption in the staple food value chains
- Sustainability, agriculture
- Sustainable agriculture and local food systems.
- The built environment in a post-covid era
- The form of cities, transportation in cities.
- The impact of the built environment on the spread of a pandemic; Transportation planning and operation management and the spread of pandemic
- Transportation modes and use, city planning
- Understanding how the human rights of marginalized communities and racial discrimination intersect with risk to Covid-19 and community resiliency. Understanding how environmental governance is impacted by disruptions created by the pandemic and with what effects on sustainability. Working with Indigenous and Afro-descendant communities that have been adversely affected by the pandemic and understanding how those populations defend their wellbeing.
- Using technology to engage youth, mindfulness
- Vaccine effectiveness
- Virtual exchange
- Water insecurity, WASH, gender-based violence, maternal & child health

- We work mainly with rural populations in Africa and are actively assessing the impact of COVID-19 on their health, livelihoods and societies.
- We work on complex health issues
- Yes, but there is no clarity because of the constant changes.
- Youth development and international exchange
- Zoonotic disease and illegal wildlife trade

16. As a result of the societal impact of the corona virus, will you change your research, teaching or engagement activities to address the new challenges of the post corona world?

- 43.3% I believe my research is relevant to issues important in a post pandemic world
- 14.2% Yes, I will shift focus to address topics tied to a post pandemic world
- 42.5% No, I will continue my current research which may not be relevant to the impact of the coronavirus.

17. Has the pandemic accelerated the importance/urgency of your academic activities?

- 30.6% Yes, definitely
- 46.0% No
- 23.4% I am not sure

18. Has the onset of this pandemic provided you with a unique opportunity to study phenomena that would otherwise not be possible? For example, climate scientists can measure air quality resulting from a pause in economic activity. If there are new opportunities, please describe:

- As an example, we are interested in how migrant workers are being impacted by the COVID-19 crisis and their perceptions of how they crisis might be mitigated.
- Built environment vulnerability
- COVID-19 in wastewater
- Depressingly so - more people suffering from hunger, missing out on childhood vaccinations...
- Disease spillover
- Disruption of agri-food value chains
- Education methodologies
- Environmental impacts of societal lockdowns.
- Epidemic modeling, privacy
- Expanded virology studies to include COVID-19
- False information from internet sources
- Farm safety / COVID
- Food system adaptation
- Food system resilience and adaptation
- Genetic database of corona viruses in bats, and wildlife is urgently needed.
- Home testing for cancer prevention
- How food is better utilized when there is disruption in the distribution system.
- How students learn online, particularly in lab-based courses
- I co-wrote a scholarly commentary (with my doctoral student) about changing production practices because of the pandemic, and how that should affect research and education in our field. The commentary was accepted for publication in the International Journal of Sport Communication
- I have taken time to learn more technology skills
- I study people's risk perception around poaching and illegal wildlife trade. There are good opportunities to explore post-pandemic risk perception.
- I'm an economist, there have been many disruptions to the food system and economic system to study

- Intersectionality and health outcome
- New applications for our basic research on respiratory function and rehabilitation
- Predisposition of persons with chronic diseases to COVID-19
- Problems of the gig economy for performing artists (see above).
- Psychosocial and Cognitive Impact
- Rapid change in the ways people are forced to deliver educational programs
- Receptivity to vaccines
- Reduced resources for vector control and surveillance may result in a strong impact because of this abrupt shift. Understanding how diversions from a pandemic, natural disaster, or political unrest/conflict impacts human health is one avenue that could be pursued
- Resilience
- Reductions in human movement make it easier to study the actions of urbanization on animals
- Role of virtual design studio in architectural curriculum and international collaboration
- See above
- See One Health Website
- Since I cannot travel internationally, I am researching local populations within UF to understand the impact of social isolation, academic readiness, and depression/anxiety/stress
- Stress management, anxiety, domestic violence, drug addiction
- Student learning and teachers teaching remotely and via other means.
- Study the linkage between the form of the built environment and the spread of pandemic.
- Transmission and mitigation of COVID19
- Understanding the adjustment to using collective modes of transportation (e.g., Uber, Lyft, public transit)
- View of distance education in Asia
- Vulnerability of underprivileged settlements
- We are able to reach out more and the importance of issues is heightened
- We've been looking physical activity on trails and neighborhoods since the lockdown with a focus on social distancing and other health related compliance
- With changes in supply chains, etc. And my work focusing (partly) on small-scale farmers addressing local markets, there could be impacts measured on the demand for produce generated by the systems that I study.
- Yes, we are trying to develop instruments to help characterize the changing biosphere. We are having trouble finding seed funds for our project, which has greatly been slowed by that lack of funding.

PART C: The UF Artificial Intelligence Initiative

19. Are you aware of the UF AI initiative?

76.0% Yes

16.1% No

7.9% I am not sure

20. Do you currently have expertise in AI?

17.9% Yes

82.1% No

21. Do you believe AI is relevant to your academic discipline?

- 36.2% Definitely Yes
- 29.5% Probably Yes
- 23.6% Might or Might Not

- 8.3% Probably Not
- 2.4% Definitely Not

22. Do you anticipate that your **international research** will include AI enabled applications, methods, or processes tied to your research, teaching or engagement?

29.2% Yes

30.4% No

40.3% I Am Not Sure

23. Do your international partners have capabilities with AI?

17.7% Yes

35.8% No

46.5% I Am Not Sure

Thank You for Your Feedback

The survey elicited a substantial number of open ended comments that range across topics from advocacy, collaborating with international partners, attitudes about travel, social justice, artificial intelligence, and general feedback about the International Center.

Advocacy

- The most important thing: Advocate with UF and state leadership for international students and faculty, who are currently in extremely hard circumstances due to restrictions and uncertainties related to travel and visa. Travel and visa are ESSENTIAL to the life and wellbeing of these international families. The current visa-related uncertainties for F-1 and J-1 personnel, for example, are having a disruptive effect on the well-being, mental health, and consequently work productivity of UF internationals. International students and faculty need to know from UF leadership that they are valued and that their interests are listened to and protected in the current toxic environment. A practical example: UF should join Harvard, MIT and dozens of other universities across the nation in denouncing and legally contrasting the most recent F-1 visa restrictions.
- The most important roles of the International Center for my research are to provide clear, crisp, swift, reliable guidance and knowledgeable assistance on how to deal with immigration and quarantine issues, both for people coming in (postdocs, grad students as well as short term visitors) and those going out (myself, current postdocs who are citizens of other countries, etc.).
- The current UF administration and the state of Florida seems to discourage any research collaborations with China. I understand the sensitivity of some technology-related research, but to discourage all collaborative research is problematic. Many research such as collaborative research in air pollution and climate change will benefit the US since air pollution and emission of greenhouse gases will not only affect China, they also impact US as well. Without hard data from research in China, we even don't know how much does China contribute to the global air quality and climate change? So, I hope UFIC can convey this message to the administration and encourage faculty to do more and not less on collaborative research in this area.
- Thank you for the work you do on behalf of our faculty, international students, and international partners. Invaluable.
- Right now it is important to show the value of International Activities for the people of our state and country. Xenophobia is on the rise and there is much misinformation. The current visa and work permit restrictions for foreigners are a threat to our society that is not appreciated by most people. The US has always benefited from bringing the most talented scientists here and giving them opportunities that they did not have in their home countries

- a true win-win. Right now bright young scientists go to Canada or Europe and are not allowed to come to the US. Soon they will not want to come anymore. So the International Center needs to do some PR right now to make clear the tremendous value of International Activities.

- Indicate please a clear operative person to discuss advancing in issues
- I hope UF-IC will support our international collaboration and exchange among scholars especially during the current political situations.
- I appreciate the impetus of the center and the support it gives faculty.

Advocacy for Students

- And our international students are very, very anxious about the new regs and whether they can remain in country.
- Biggest concern right now is the silence from UF regarding the ICE regulations and how they affect our international students. Know this is not specifically UFIC's fault, but any pressure UFIC can apply to the University to at least make _some_ statement to ease the anxieties among our current international students would be the best thing UFIC can do right now.
- I am most concerned about our international students. Visa regulations and travel restrictions related to public health put them in a very precarious position. The reckless response from our government and too many institutions will only make things worse.
- I think it is more important than ever before to expose our students to the world outside of the US. We need to continue our initiatives to encourage them to be active global citizens. The way we do it may change in the short-term but it is important to keep them learning with a global focus.
- If all possible, suggest to examine the UF policy on international graduate recruitment, particularly from China. The current and future hostile policy/study environments inside and outside UF may have detrimental impact on UF's position on international collaboration in addition to student recruiting. UF may need to find a way to sustain the PhD population particularly in science and engineering after the perception of hostile environment for Chinese students and scholars.
- Is UFIC informing international students and scholars what to do if ICE visits them?
- Is UFIC informing UF faculty what they should say if an ICE officer questions them about instructional modalities for international students in the fall?
- It's great that the international center is trying to assess how they can help faculty in the future, but how about some help right now? What am I supposed to tell international students who have been accepted into the UF grad program but whose visa status is in limbo? They are stuck in their home countries worried about what will happen to them. What are we to tell them. I'd like some guidance. I have asked twice and haven't even had any acknowledgement that the question has been posed....
- Main priority should be to defend rights and status of international graduate students at UF. Let us know how we can help!
- My international students and scientists have had excellent assistance with visa issues and answers to other important questions.
- Thank you for your support to international students!
- The most important thing: Advocate with UF and state leadership for international students and faculty, who are currently in extremely hard circumstances due to restrictions and uncertainties related to travel and visa. Travel and visa are ESSENTIAL to the life and wellbeing of these international families. The current visa-related uncertainties for F-1 and J-1 personnel, for example, are having a disruptive effect on the well-being, mental health, and consequently work productivity of UF internationals. International students and faculty

need to know from UF leadership that they are valued and that their interests are listened to and protected in the current toxic environment. A practical example: UF should join Harvard, MIT and dozens of other universities across the nation in denouncing and legally contrasting the most recent F-1 visa restrictions.

Collaboration

- As the International Outreach for the strawberry breeding program is my duty, international travels to different destinations in the world are very important to meet interested parties who utilize our UF cultivars. I have been holding workshops and all meetings online since the pandemic but I hope I will be able to travel to achieve more issues that need me personally to be there based on the culture I am dealing with which usually seeing and meeting you in person will make a difference in their decision.
- I hope UF-IC will support our international collaboration and exchange among scholars especially during the current political situations.
- I would love to attend a workshop or read material on international research during COVID - when/where are we allowed to travel, can we still access UF funding for international research (or repurpose it), etc. Thank you!
- If all possible, suggest to examine the UF policy on international graduate recruitment, particularly from China. The current and future hostile policy/study environments inside and outside UF may have detrimental impact on UF's position on international collaboration in addition to student recruiting. UF may need to find a way to sustain the PhD population particularly in science and engineering after the perception of hostile environment for Chinese students and scholars.
- Organizing UF teams for proposal development
- The role of the International Center increased substantially in the three last years because of the political climate in the US, and the added bureaucratic scrutiny of international collaborations. I hope that the International center can serve as an advocate for stronger ties to other cultures, and educate the society (and UF staff) on the importance of international collaborations
- We will find a way. And the isolation has created new needs for multiple different international web based seminar opportunities. I participate in 3, one of which I (and our center) organized. The pandemic has made some international scientists reach out since there is recognition that our research is relevant to a respiratory disease with neural implications, and the shift to web based communication means everyone climbed on board. Our new series has something greater than 200 tuning in each week, with up to 500 viewing the recording on line (when we post one, depending on the speaker). Other interactions have been squashed, such as an emerging and an existing collaboration in Canada (which did benefit from visits). Another casualty has been decreased ability to recruit international trainees to our laboratory.

Hurdles to Collaboration

- I am a new faculty at U Florida. Most of my work is from my previous institution. One area of improvement in most institutions is the management of international projects, disbursement of funds to international partners, and accountability. Most departments have accounting support but don't have good knowledge of how to manage accounts that funds work done outside the US. This has resulted in delays of payments to partners abroad and reimbursements to traveling faculty/staff, and more paper-work than what is potentially needed. The center could help facilitate training on this aspect.

- Pedagogy has overtaken my research time this summer -- I have taken 3 online classes to prepare for online teaching and dealing with the trauma faced by our students. I am also responding to the mounting crisis of racial inequality by reforming the content in my music history classes.
- Right now it is important to show the value of International Activities for the people of our state and country. Xenophobia is on the rise and there is much misinformation. The current visa and work permit restrictions for foreigners are a threat to our society that is not appreciated by most people. The US has always benefited from bringing the most talented scientists here and giving them opportunities that they did not have in their home countries - a true win-win. Right now bright young scientists go to Canada or Europe and are not allowed to come to the US. Soon they will not want to come anymore. So the International Center needs to do some PR right now to make clear the tremendous value of International Activities.
- The current UF administration and the state of Florida seems to discourage any research collaborations with China. I understand the sensitivity of some technology-related research, but to discourage all collaborative research is problematic. Many research such as collaborative research in air pollution and climate change will benefit the US since air pollution and emission of greenhouse gases will not only affect China, they also impact US as well. Without hard data from research in China, we even don't know how much does China contribute to the global air quality and climate change. So, I hope UFIC can convey this message to the administration and encourage faculty to do more and not less on collaborative research in this area.
- The University of Florida is a very hierarchical and bureaucratic institution. To expand international collaboration and the UF international footprint, administration should engage with faculty to stimulate and facilitate the processes needed for international collaboration. If we want to be part of the large institutions that have a global impact, we need to change our mentality as an institution that is more regional than global.
- There are many firewalls when working with military programs. There are very few applications that can be used with bases.

Travel

- As the International Outreach for the strawberry breeding program is my duty, international travels to different destinations in the world are very important to meet interested parties who utilize our UF cultivars. I have been holding workshops and all meetings online since the pandemic but I hope I will be able to travel to achieve more issues that need me personally to be there based on the culture I am dealing with which usually seeing and meeting you in person will make a difference in their decision.
- Can you tell us when it will be safe to travel overseas?
- During the fall semester, the center should hold an online program to inform professors of study abroad courses about the pandemic. For example, you discuss questions that inform us where have our courses been offered and how serious the pandemic is in those countries. When will it be safe to offer study abroad courses again? How can we convince students (and their parents) that studying abroad is safe (in the future when we're ready to offer courses again)?
- Help make sure any rulings concerning faculty and student travel internationally is as rationally based as possible in the circumstances prevailing at the time.
- I would love to attend a workshop or read material on international research during COVID - when/where are we allowed to travel, can we still access UF funding for international research (or repurpose it), etc. Thank you!

Managing Disruption

- As the International Outreach for the strawberry breeding program is my duty, international travels to different destinations in the world are very important to meet interested parties who utilize our UF cultivars. I have been holding workshops and all meetings online since the pandemic but I hope I will be able to travel to achieve more issues that need me personally to be there based on the culture I am dealing with which usually seeing and meeting you in person will make a difference in their decision.
- Can you tell us when it will be safe to travel overseas?
- During the fall semester, the center should hold an online program to inform professors of study abroad courses about the pandemic. For example, you discuss questions that inform us where have our courses been offered and how serious the pandemic is in those countries. When will it be safe to offer study abroad courses again? How can we convince students (and their parents) that studying abroad is safe (in the future when we're ready to offer courses again)?
- Pedagogy has overtaken my research time this summer -- I have taken 3 online classes to prepare for online teaching and dealing with the trauma faced by our students. I am also responding to the mounting crisis of racial inequality by reforming the content in my music history classes.

Social Justice

- Although my work is not in AI directly, I have taught on social issues related to big data, privacy, big data algorithms, etc. I am curious to explore possible relevant research topics and teaching in the future.
- If you can ensure that the AI efforts have a focus on equity, then perhaps they will be useful. Otherwise, my concern is that they will just help those least vulnerable sectors within our society advance more, thereby expanding the gap to further marginalize disadvantaged sectors and members of particular communities. Until AI proposals are prioritized according to the degree to which they promote social justice, we will just get the same old same old -- benefiting the usual suspects, status quo, industrial agriculture, those folks already innovating and benefiting from the ongoing technological evolution. This is a huge ethical issue and I am yet to see a systematic effort at UF to address it. I would like to be wrong and I remain open to surprise. But, I am not holding my breath.
- Is UFIC informing international students and scholars what to do if ICE visits them?
- Is UFIC informing UF faculty what they should say if an ICE officer questions them about instructional modalities for international students in the fall?
- Why were there no questions related to BLM? They are certainly relevant. The UF obsession with the AI initiative is troubling but not unexpected. A top 5 university cannot underfund and ignore the humanities and social sciences.

Artificial Intelligence

- Although my work is not in AI directly, I have taught on social issues related to big data, privacy, big data algorithms, etc. I am curious to explore possible relevant research topics and teaching in the future.
- I have nothing against AI research, but the huge amount of money being invested in this initiative at a time when Colleges/Departments at UF are being forced to make substantial budget cuts is completely wrongheaded.
- I think AI is being overly hyped because of big dollars coming in. I know what it is and how it works, but pure emphasis on AI, will dilute the capability of scientists to truly understand

the mechanism underneath processes. I am a crop physiologist/crop model who works with mechanisms and see AI as blindly searching.

- If you can ensure that the AI efforts have a focus on equity, then perhaps they will be useful. Otherwise, my concern is that they will just help those least vulnerable sectors within our society advance more, thereby expanding the gap to further marginalize disadvantaged sectors and members of particular communities. Until AI proposals are prioritized according to the degree to which they promote social justice, we will just get the same old same old -- benefiting the usual suspects, status quo, industrial agriculture, those folks already innovating and benefiting from the ongoing technological evolution. This is a huge ethical issue and I am yet to see a systematic effort at UF to address it. I would like to be wrong and I remain open to surprise. But, I am not holding my breath.
- In our field of research (Particle physics, High Energy physics) we already use a lot the Artificial Intelligence (Machine Learning) in large data analysis, and strongly participate in its development. Our students our experts in this area and hired as experts in this area both in and outside of our field of research
- In terms of the AI initiative, I would be interested in receiving training and being linked to other international scholars across campus to explore how AI could be used to monitor the illegal trade of wildlife. Of particular interest would be using AI to track high-risk routes for trafficking and illegal market entry points. This has ramifications for biodiversity but also issues such as zoonotic disease transmission such as Covid-19.
- Why were there no questions related to BLM? They are certainly relevant. The UF obsession with the AI initiative is troubling but not unexpected. A top 5 university cannot underfund and ignore the humanities and social sciences.
- With AI, big data, we should be very cautious and attentive to some of the critique in this interview: <https://www.newframe.com/thoughts-on-the-planetary-an-interview-with-achille-mbembe/> Given how AI also reinforces certain types of racialization, it seems to be the utmost ethical paradox that UF would champion this initiative without questioning it, especially in the present moment marked by racial and social justice movements.

Comments to the International Center

- Any way in which the IC can support us would be wonderful. I'm rather desperate for logistic and financial support to facilitate work abroad, but especially (in the future) for bringing visiting scholars to UF. That has proven very difficult to date.
- As you will surmise from my responses, I am especially focused on the work of our MDP students who work on a broad array of topics, most of which have connections to the ongoing crisis. Support to date from the International Center has been quite important to the MDP program.
- During the fall semester, the center should hold an online program to inform professors of study abroad courses about the pandemic. For example, you discuss questions that inform us where have our courses been offered and how serious the pandemic is in those countries. When will it be safe to offer study abroad courses again? How can we convince students (and their parents) that studying abroad is safe (in the future when we're ready to offer courses again)?
- Good luck getting us back up and running as a premier international research institution. We need it now more than ever.
- great job!
- I am a new faculty at U Florida. Most of my work is from my previous institution. One area of improvement in most institutions is the management of international projects, disbursement of funds to international partners, and accountability. Most departments have accounting support but don't have good knowledge of how to manage accounts that

funds work done outside the US. This has resulted in delays of payments to partners abroad and reimbursements to traveling faculty/staff, and more paper-work than what is potentially needed. The center could help facilitate training on this aspect.

- I appreciate the impetus of the center and the support it gives faculty. However, the onerous requirements of courses that can be taught as part of the international studies curriculum--supported by a grant from the international center--should be reviewed. Having to submit metrics on every assignment has kept me from participating in a program I would truly like to be a part of. Telling faculty members how to teach their courses and to add really middle-school like experiential assignments doesn't help either.
- I have had excellent assistance when developing new or renewing International MOUs (am currently involved in 2).
- I truly appreciate all the work that the UFIC does. I have worked with you guys since 2007 and always had great assistance and high level of competence and professionalism. Thanks!
- My international students and scientists have had excellent assistance with visa issues and answers to other important questions.
- Thank you for all that you do to internationalize education and research at the University of Florida!
- Thank you for the work you do on behalf of our faculty, international students, and international partners. Invaluable.
- Thank you for this great survey. I feel it very useful and informative.
- Thank you for your interest.
- Thank you for your support to international students!
- Thanks for your outstanding work
- Thanks for your support!
- Thanks!
- The current UF administration and the state of Florida seems to discourage any research collaborations with China. I understand the sensitivity of some technology-related research, but to discourage all collaborative research is problematic. Many research such as collaborative research in air pollution and climate change will benefit the US since air pollution and emission of greenhouse gases will not only affect China, they also impact US as well. Without hard data from research in China, we even don't know how much does China contribute to the global air quality and climate change? So, I hope UFIC can convey this message to the administration and encourage faculty to do more and not less on collaborative research in this area.
- The International Center is a fantastic resource and we (faculty) should work together with UFIC to grow the international student community by finding creative ways of engaging it while abroad.. for this year and 2021... so they will be really excited to come in 2022!
- The most important roles of the International Center for my research are to provide clear, crisp, swift, reliable guidance and knowledgeable assistance on how to deal with immigration and quarantine issues, both for people coming in (postdocs, grad students as well as short term visitors) and those going out (myself, current postdocs who are citizens of other countries, etc.).
- The role of the International Center increased substantially in the three last years because of the political climate in the US, and the added bureaucratic scrutiny of international collaborations. I hope that the International center can serve as an advocate for stronger ties to other cultures, and educate the society (and UF staff) on the importance of international collaborations.

Other

- The questionnaire is focused on research, many of us teach, train, plan, etc. with international partners. Most questions were about research with little room/opportunity to discuss other kinds of activities.
- Workshop online with tutorials

SUPPORTING FACULTY TO BUILD KNOWLEDGE GLOBALLY.

